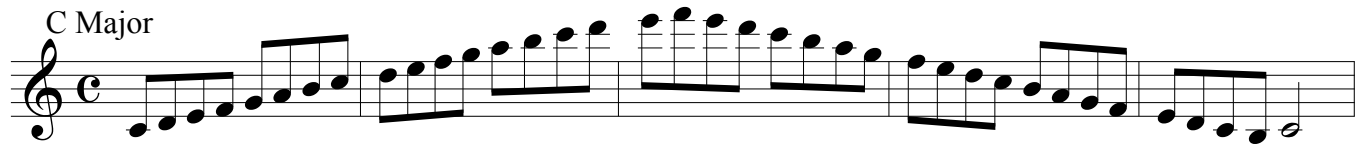


Major Scales

Full Range (without High F# Key)

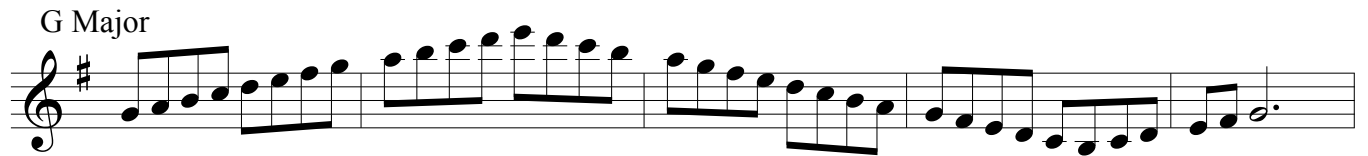
Mertens

C Major




Musical notation for the C Major scale in treble clef, common time (C). The scale is written in a single line, starting on middle C (C4) and ascending to C5, then descending back to C4. The notes are: C4, D4, E4, F4, G4, A4, B4, C5, B4, A4, G4, F4, E4, D4, C4.

G Major



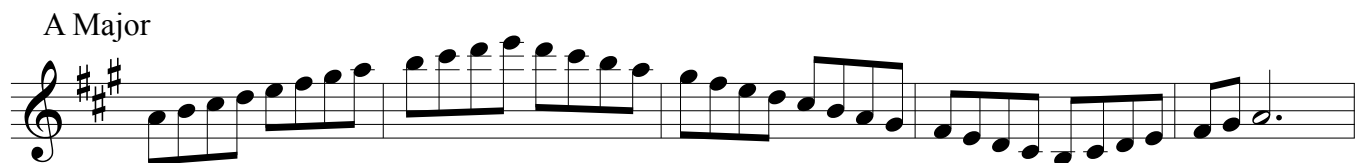
Musical notation for the G Major scale in treble clef, common time (C). The key signature has one sharp (F#). The scale is written in a single line, starting on G4 and ascending to G5, then descending back to G4. The notes are: G4, A4, B4, C5, B4, A4, G4, F#4, E4, D4, C4, B3, A3, G4.

D Major



Musical notation for the D Major scale in treble clef, common time (C). The key signature has two sharps (F# and C#). The scale is written in a single line, starting on D4 and ascending to D5, then descending back to D4. The notes are: D4, E4, F#4, G4, A4, B4, C#5, D5, C#5, B4, A4, G4, F#4, E4, D4.

A Major



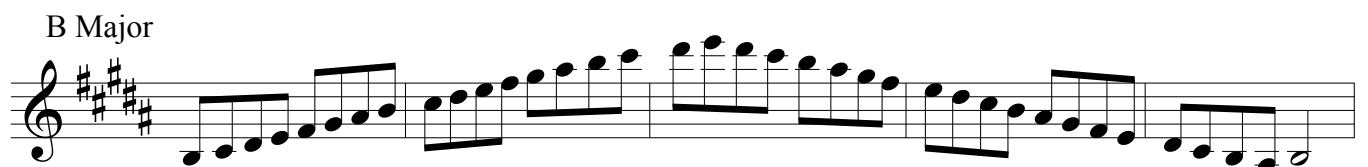
Musical notation for the A Major scale in treble clef, common time (C). The key signature has three sharps (F#, C#, and G#). The scale is written in a single line, starting on A3 and ascending to A4, then descending back to A3. The notes are: A3, B3, C#4, D4, E4, F#4, G#4, A4, G#4, F#4, E4, D4, C#4, B3, A3.

E Major



Musical notation for the E Major scale in treble clef, common time (C). The key signature has four sharps (F#, C#, G#, and D#). The scale is written in a single line, starting on E3 and ascending to E4, then descending back to E3. The notes are: E3, F#3, G#3, A3, B3, C#4, D#4, E4, D#4, C#4, B3, A3, G#3, F#3, E3.

B Major



Musical notation for the B Major scale in treble clef, common time (C). The key signature has five sharps (F#, C#, G#, D#, and A#). The scale is written in a single line, starting on B2 and ascending to B3, then descending back to B2. The notes are: B2, C#3, D#3, E3, F#3, G#3, A#3, B3, A#3, G#3, F#3, E3, D#3, C#3, B2.

F# Major



Musical notation for the F# Major scale in treble clef, common time (C). The key signature has six sharps (F#, C#, G#, D#, A#, and E#). The scale is written in a single line, starting on F#3 and ascending to F#4, then descending back to F#3. The notes are: F#3, G#3, A#3, B3, C#4, D#4, E#4, F#4, E#4, D#4, C#4, B3, A#3, G#3, F#3.

Gb Major



Musical notation for the Gb Major scale in treble clef, common time (C). The key signature has six flats (Bb, Eb, Ab, Db, Gb, and Cb). The scale is written in a single line, starting on Gb3 and ascending to Gb4, then descending back to Gb3. The notes are: Gb3, Ab3, Bb3, Cb4, Db4, Eb4, Gb4, Fb4, Eb4, Db4, Cb4, Bb3, Ab3, Gb3.

C# Major



Db Major



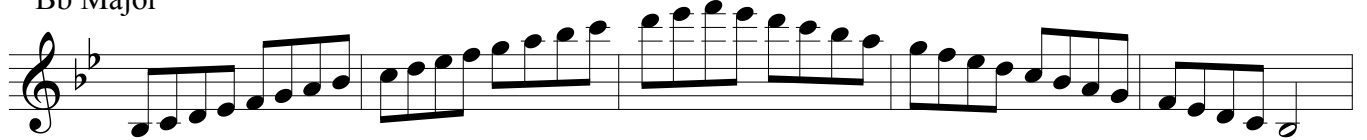
Ab Major



Eb Major



Bb Major



F Major

