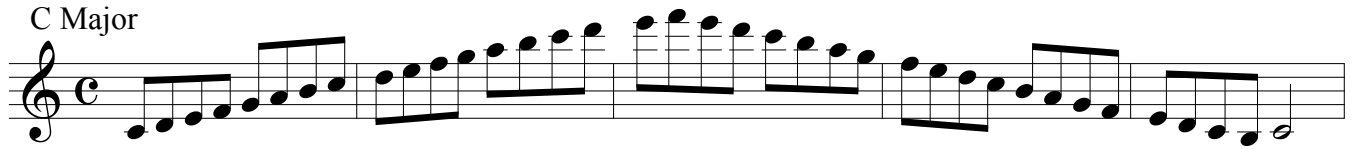


Major Scales

Full Range (with High F# Key)

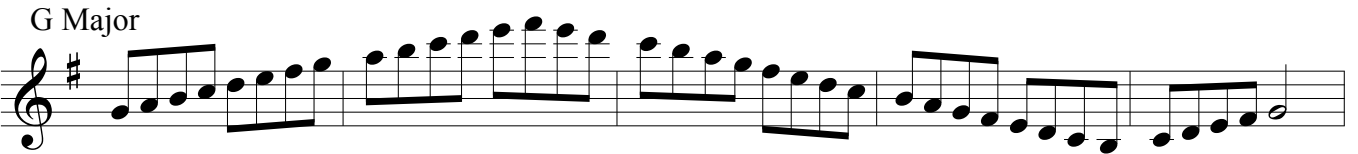
Mertens

C Major



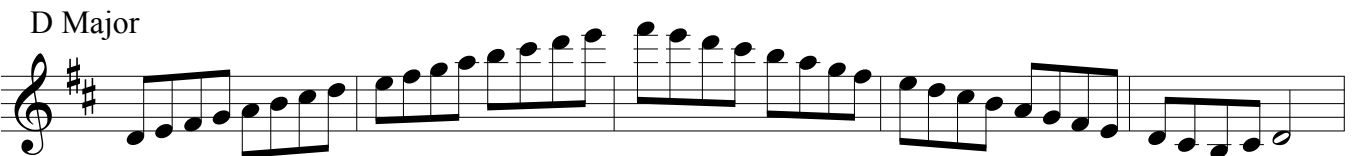
Musical notation for the C Major scale, starting on middle C (C4) and ascending to C5. The scale is written in treble clef with a common time signature (C). The notes are: C4, D4, E4, F4, G4, A4, B4, C5, B4, A4, G4, F4, E4, D4, C4.

G Major



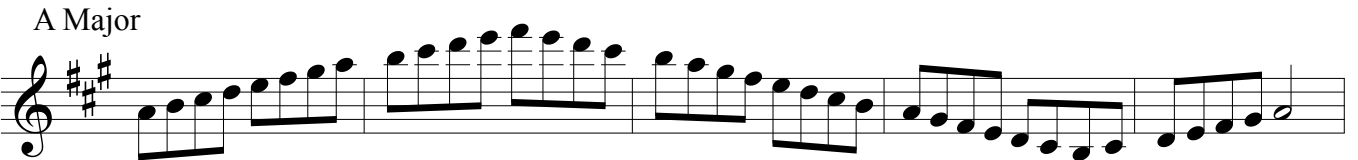
Musical notation for the G Major scale, starting on G4 and ascending to G5. The scale is written in treble clef with one sharp (F#). The notes are: G4, A4, B4, C5, D5, E5, F#5, G5, F#5, E5, D5, C5, B4, A4, G4.

D Major




Musical notation for the D Major scale, starting on D4 and ascending to D5. The scale is written in treble clef with two sharps (F# and C#). The notes are: D4, E4, F#4, G4, A4, B4, C#5, D5, C#5, B4, A4, G4, F#4, E4, D4.

A Major



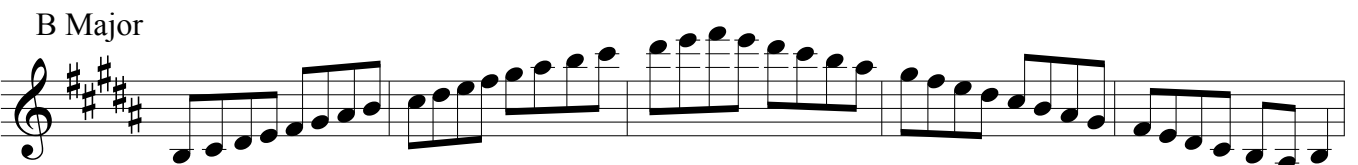
Musical notation for the A Major scale, starting on A3 and ascending to A4. The scale is written in treble clef with three sharps (F#, C#, G#). The notes are: A3, B3, C#4, D4, E4, F#4, G#4, A4, G#4, F#4, E4, D4, C#4, B3, A3.

E Major



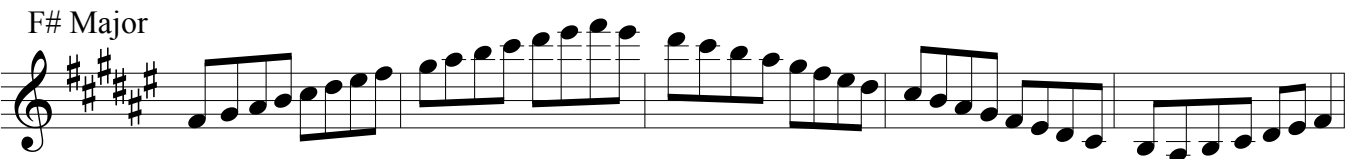
Musical notation for the E Major scale, starting on E3 and ascending to E4. The scale is written in treble clef with four sharps (F#, C#, G#, D#). The notes are: E3, F#3, G#3, A3, B3, C#4, D#4, E4, D#4, C#4, B3, A3, G#3, F#3, E3.

B Major




Musical notation for the B Major scale, starting on B2 and ascending to B3. The scale is written in treble clef with five sharps (F#, C#, G#, D#, A#). The notes are: B2, C#3, D#3, E3, F#3, G#3, A#3, B3, A#3, G#3, F#3, E3, D#3, C#3, B2.

F# Major



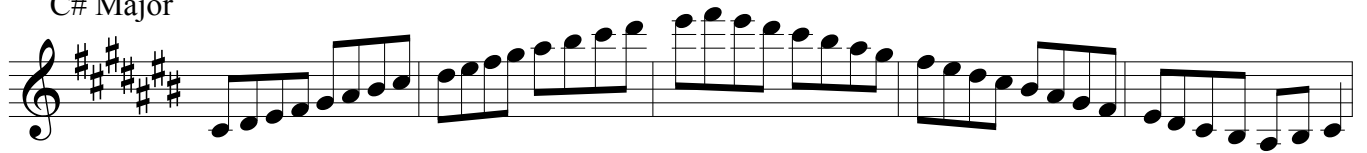
Musical notation for the F# Major scale, starting on F#3 and ascending to F#4. The scale is written in treble clef with six sharps (F#, C#, G#, D#, A#, E#). The notes are: F#3, G#3, A#3, B3, C#4, D#4, E#4, F#4, E#4, D#4, C#4, B3, A#3, G#3, F#3.

Gb Major

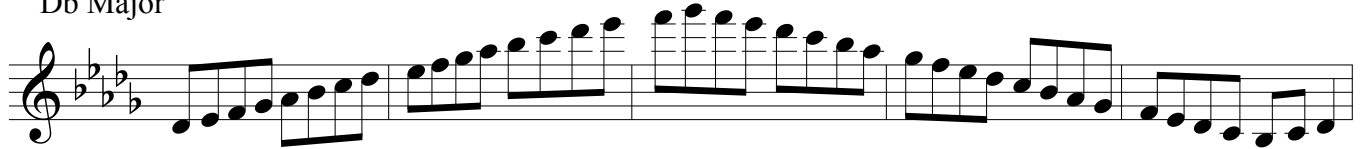


Musical notation for the Gb Major scale, starting on Gb3 and ascending to Gb4. The scale is written in treble clef with six flats (Bb, Eb, Ab, Db, Gb, Cb). The notes are: Gb3, Ab3, Bb3, Cb4, Db4, Eb4, Fb4, Gb4, Fb4, Eb4, Db4, Cb4, Bb3, Ab3, Gb3.

C# Major



Db Major



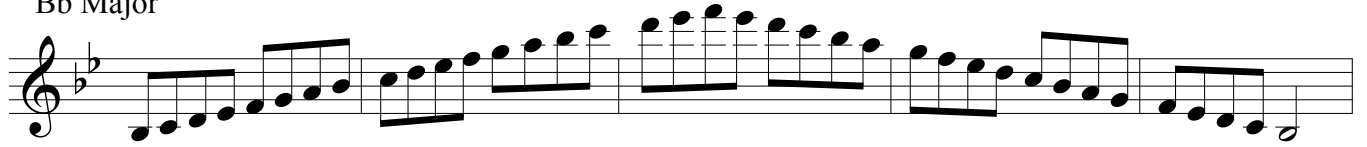
Ab Major



Eb Major



Bb Major



F Major

